

# International CBRNE Institute (ICI)

International Non Profit Organization (INPO)



# Historical Background

The International CBRNE Institute (ICI) was established in partnership with the municipality of Les Bons Villers, Belgium. The Royal Decree incorporating the ICI, as an independent International Non-Profit Organization, was granted on 30 August 2013

The ICI was officially inaugurated on 5 October 2013 by Ms. Agnes Marcaillou (Director of the United Nations Mine Action Service (UNMAS)), Mr. Wart (Mayor Les Bons Villers), Mr. Mattmann (CEO HZS) and Mr. Dubucq (Managing Director ICI)

# LOCATION: Les Bons Villers BELGIUM



# ICI KC's Expertise







International CBRNE Institute



[HOME](#) | [NEWS](#) | [ABOUT](#)

| [CBRN Knowledge Center](#) | [Explosives Knowledge Center](#) | [WORKSHOPS/SEMINARS](#)



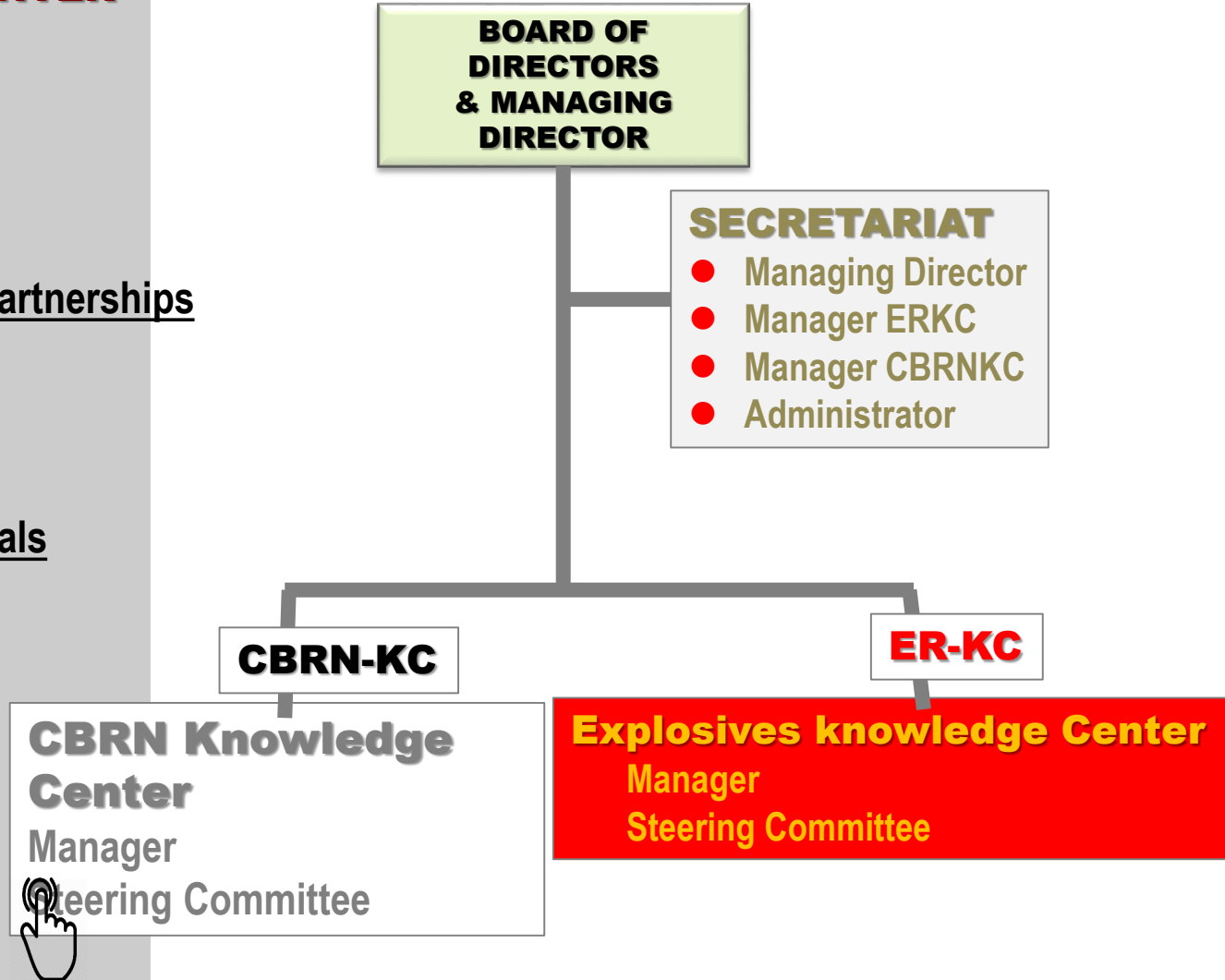
[The Institute](#)  
[Mission](#)  
[Structure](#)  
[The Facility](#)  
[Conference Center](#)



*The European Reference Point for all CBRNE-related activities*

## ER-KC KNOWLEDGE CENTER

- ◆ [The Manager of E-KC](#)
- ◆ [ER-KC Structure](#)
- ◆ [ER-KC Vision](#)
- ◆ [CBRN Collaborations & Partnerships](#)
- ◆ [CBRNE-related workshop](#)
- ◆ [CBRN Publications](#)
- ◆ [CBRN Educational materials](#)



## ER-KC KNOWLEDGE CENTER

- ◆ [The Manager of E-KC](#)
- ◆ [ER-KC Structure](#)
- ◆ [ER-KC Vision](#)
- ◆ [CBRN Collaborations & Partnerships](#)
- ◆ [CBRNE-related workshop](#)
- ◆ [CBRN Publications](#)
- ◆ [CBRN Educational materials](#)

The Knowledge Centre refers to a **network** of experts and CBRN-E organizations (e.g. universities, companies, NPOs) collaborating together to pursue excellence in a number of areas of CBRN-E matters, Counter Explosive Hazards (**C-EH**) in particular

The E-KC vision will be materialized via respective Task Forces (TF) as follows:

- TF 1: [Technology Watch and Shared R&D](#)
- TF 2: [Validation and European Standards](#)
- TF 3: [Training and Risk Education](#)
- TF 4: [Meeting the C-EH Practitioners' Requirements](#)
- TF 5: [Countering specific Threats](#)



## ER-KC KNOWLEDGE CENTER

- ◆ The Manager of E-KC
- ◆ ER-KC Structure
- ◆ ER-KC Vision
- ◆ CBRN Collaborations & Partnerships
- ◆ CBRNE-related workshop
- ◆ CBRN Publications
- ◆ CBRN Educational materials

## TASK FORCE 1

### Technology Watch and Share R&D

- **Continuous improvement** of C-EH-related technologies through an exchange of R&D results among the scientific community and via adequate interdisciplinary technology transfer
- Share **expertise** and particularly **research** through dedicated workshops, in close cooperation with the GICHD, NATO COE, EDA and other stakeholders (ECSA, IMEKO, CLAWAR, SED)
- **Monitor** the developed tools and prepare their validation and their wider implementation



Toolbox Implementation for Removal  
of Anti-personnel Mines, Submunitions and Uxo



**BEMEKO**





## ER-KC KNOWLEDGE CENTER

- ◆ The Manager of E-KC
- ◆ ER-KC Structure
- ◆ ER-KC Vision
- ◆ CBRN Collaborations & Partnerships
- ◆ CBRNE-related workshop
- ◆ CBRN Publications
- ◆ CBRN Educational materials

**EXAMPLE for ITA MoD - MINERVA** is a vehicle-mounted ground penetrating radar (GPR) sensor for counter-IED and mine route clearance. It is a product of IDS's past experience in developing and manufacturing market leading GPR systems and its expertise in radar systems and antenna design. It uses from one to four modular antenna arrays to produce radar images of the subsoil, from 2D images to complex real-time high resolution 3D tomography.

**IDS Company** : The IDS group employs >400 full time professional in Italy and over 100 specialized professionals overseas. Contact: <https://www.idscorporation.com/safety-protection-systems/>



Contact: Ms Luigia NUZZO  
([l.nuzzo@idscorporation.com](mailto:l.nuzzo@idscorporation.com))

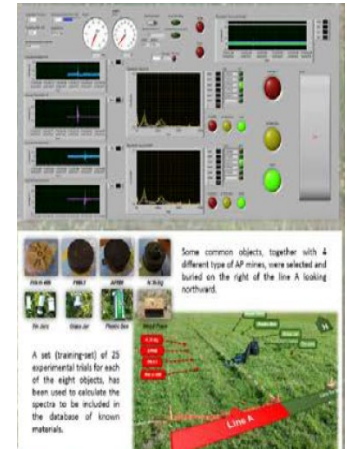
## ER-KC KNOWLEDGE CENTER

- ◆ The Manager of E-KC
- ◆ ER-KC Structure
- ◆ ER-KC Vision
- ◆ CBRN Collaborations & Partnerships
- ◆ CBRNE-related workshop
- ◆ CBRN Publications
- ◆ CBRN Educational materials



## TASK FORCE 2 Validation and European Standards

- Promote EU-wide **standards** of relevant counter Explosives hazards technologies, tests and evaluations of related equipment
- Maintain a dedicated permanent **lab-space** for baseline testing of performance and suggest appropriate **test** areas for field testing
- Suggest and validate new/improved **testing procedures**, in cooperation with ICI, NATO, HCR-CTRO, the European Defense Agency, the European Committee for Standardization (CEN), ECSA and others
- Pursue (or propose/extend) **new CEN workshop agreements** initiated by the FP7 Projects or initiated under the current Horizon 2020 projects

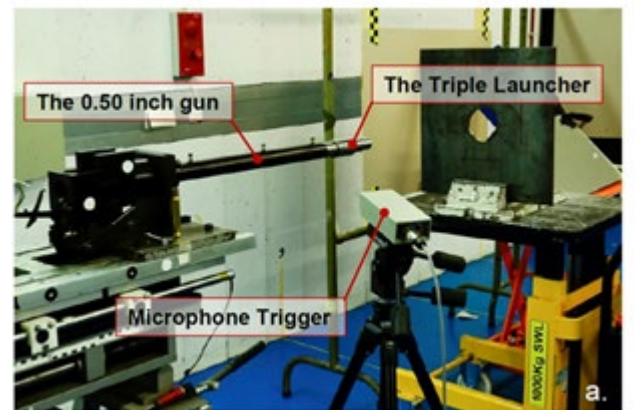


## ER-KC KNOWLEDGE CENTER

- ◆ [The Manager of E-KC](#)
- ◆ [ER-KC Structure](#)
- ◆ [ER-KC Vision](#)
- ◆ [CBRN Collaborations & Partnerships](#)
- ◆ [CBRNE-related workshop](#)
- ◆ [CBRN Publications](#)
- ◆ [CBRN Educational materials](#)

EXAMPLE. PPE (Hotzonesolutions/RMA)

The assessment of the resistance of a material under near simultaneous multiple impacts, as in a case of the fragmentation generated by IED explosion, can be roughly described by single ballistic impact tests. Therefore the Department of Weapon Systems and Ballistics of **the RMA**, has developed a technique that takes into account the interactions of multiple near simultaneous impacts, within certain space. **STANAG 2920**



## ER-KC KNOWLEDGE CENTER

- ◆ The Manager of E-KC
- ◆ ER-KC Structure
- ◆ ER-KC Vision
- ◆ CBRN Collaborations & Partnerships
- ◆ CBRNE-related workshop
- ◆ CBRN Publications
- ◆ CBRN Educational materials

## TASK FORCE 3

### Training and Risk Education

- Develop **survey** (prediction, prevention, detection)
- Offer advanced multinational counter Explosives Hazards courses and related **training**
- Provide **risk-education** tools for countering Explosives hazards practitioners
- EXAMPLES:

**Computer game for school children education on mine /IED risk (IMM)**

<https://youtu.be/GRcpXNJB63Y>



Billy Goat radio is a Risk Education (RE) tool allowing operators living in mine and other explosive affected areas to produce short educational serial dramas which will be broadcast by radio and performed live by a team of local actors travelling through the interested region.

Contact: [E.Cepolina.patfordemining@gmail.com](mailto:E.Cepolina.patfordemining@gmail.com)



For more information please contact directly:  
*Dr Marek Kacprzak, [marek\\_b\\_kacprzak@wp.pl](mailto:marek_b_kacprzak@wp.pl)*



## TASK FORCE 4

### Meeting the C-EH Practitioners' Requirements

## ER-KC KNOWLEDGE CENTER

EUROPOL

- ◆ The Manager of E-KC
- ◆ ER-KC Structure
- ◆ ER-KC Vision
- ◆ CBRN Collaborations & Partnerships
- ◆ CBRNE-related workshop
- ◆ CBRN Publications
- ◆ CBRN Educational materials

- Support comprehensive and integrated use of **Information Management Systems (IMS)** as requested by end users
- Realisation of synergies between all Centres focusing on Counter Explosive Hazards in view of the Systems and Security challenges of the European Union
- Close cooperation with practitioners in the field of Counter Terrorist activities and the European Corporate Security Associations (ECSA)
- **Participatory Analysis of C-EH Requirements**



# ER-KC KNOWLEDGE CENTER

- ◆ <sup>EUROPOL</sup> The Manager of E-KC
- ◆ ER-KC Structure
- ◆ ER-KC Vision
- ◆ CBRN Collaborations & Partnerships
- ◆ CBRNE-related workshop
- ◆ CBRN Publications
- ◆ CBRN Educational materials

## TASK FORCE 4 Meeting the C-EH Practitioners' Requirements

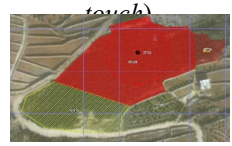



**T-AIDSS(HCR-CTRO)/T-IMS (SITE)**  
 The migration of persons towards Europe produces new problems and challenges in many domains in several EU countries, while only in Croatia this phenomenon is linked with mine action. Croatia has border long 2374 km, whereas to Bosnia and Herzegovina 1011, 4 km, to Serbia 317,6 km and to Monte Negro 22,6 km.



[milan.bajic1@gmail.com](mailto:milan.bajic1@gmail.com) Scientific Council and MS Nikola Pavković, [nikola.pavkovic@ctro.hr](mailto:nikola.pavkovic@ctro.hr)



**INFORMATION: Torsten Vikström [info@sitescandinavia.se](mailto:info@sitescandinavia.se)**

<p>GIS based (Built for multi-touch)</p> 	<p>Ordnance database (Up to ~5000 objects)</p> 	<p>UAS/UAV imagery (geotiff and more..)</p> 	<p>Share your data!</p> 
--	--	---	--

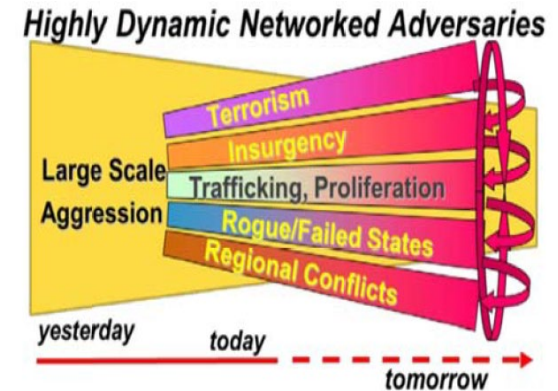


## ER-KC KNOWLEDGE CENTER

- ◆ The Manager of E-KC
- ◆ ER-KC Structure
- ◆ ER-KC Vision
- ◆ CBRN Collaborations & Partnerships
- ◆ CBRNE-related workshop
- ◆ CBRN Publications
- ◆ CBRN Educational materials

## TASK FORCE 5 Countering Threats

- Support training of practitioners in the domain of CBRNE Detection
- (together with CBRN-KC)
- Improve Sensory and Management



**Current EC Proposal RAPID**

**RAPID ACCURATE PATHOGEN INTEGRATED DETECTION**

## Knowledge CENTERS-PARTNERS

### ER-KC KNOWLEDGE CENTER

- ◆ The Manager of E-KC
- ◆ ER-KC Structure
- ◆ ER-KC Vision
- ◆ CBRNE Collaborations & Partnerships
- ◆ CBRNE-related workshop
- ◆ CBRN Publications
- ◆ CBRN Educational materials





## ER-KC KNOWLEDGE CENTER

- ◆ The Manager of E-KC
- ◆ ER-KC Structure
- ◆ ER-KC Vision
- ◆ CBRN Collaborations
- ◆ CBRNE-related workshop
- ◆ CBRN Publications
- ◆ CBRN Educational materials

## Our Competences


- ✓ The ICI KC aims to be a well of CBRNE professionals where national and international bodies or organizations can find solutions to occurring CBRNE problems they are facing.
- ✓ KC would address topics from crisis/consequence management to scientific issues, emergency planning, or technological challenges and development.
- ✓ KC members are high-level professionals from all backgrounds (international organizations, armed forces, first responder community, scientists, equipment providers, etc.) ready to assist, inform and advise on best practices about CBRNE matters.
- ✓ ER-KC Possibility to be designated as an **expert on request** for incidents involving C-EH matters (national, international), **including Humanitarian/Military Demining operations**
- ✓ Access to the C-EH **database** of professionals in all C-EH matters and networking with other professionals within the C-EH community;
- ✓ Possibility to publish your own **publications** on the ICI website of the KC community and IMEKO TC17 ACTA
- ✓ Access to publications on **testing** of C-EH (CTRO-HR) materials;
- ✓ Updates on **future** CBRN-E conferences, seminars and workshops
- ✓ **Privileged Participation conditions to International ICI WORKSHOPS (ISMCR'2018, RISE 2019, ISMCR 2019 Houston)**



# Planned activities in 2019

- ❖ Dutch Coy: Basic 2 days; 4-5 Jan
- ❖ Oman academy January, 1 week
- ❖ AFIU La Marlagne Congrès annuel Infirmier, 05 Feb
- ❖ IDEX Abu Dhabi: International Exhibition and Conference 2019 17th Feb - 21st Feb 2019
- ❖ DTRA USA February, 2 weeks
- ❖ ICI International conference on Robotics MPPM 01 – 03 April
- ❖ OPCW: April, 1 week
- ❖ Department of State USA April/May, 2 weeks
- ❖ Dubrovnik Croatia: 16th International Symposium Mine Action 2019; 08-11 April (NATO Sfp Biosensing project)
- ❖ Kuwait, Chemical Defense: May to June 2019, 8 weeks
- ❖ HUY Belgium ; Symposium de médecine critique 10 May
- ❖ NANTE France; International CBRN Conference 20- 23 May
- ❖ NCT event June 2019
- ❖ Benin-Cameroun CBRNE Information (European - CoE Africa)
- ❖ UAE presidential guard, July/August, 4 weeks
- ❖ ISMCR 2019 20-21 Sep 2019 Houston USA
- ❖ Saudis Royal Guard: September, 4 weeks
- ❖ MALMÖ Sweden:13th International CBRNe Protection Symposium 24-26 Sep
- ❖ UAE CDC, basic training TBD, 2 weeks
- ❖ RIVM (Dutch) 1 week, TBD
- ❖ Courses for urgentist: 3 x Level 2/trimester (1 day)
- ❖ 1 x Level 3/trimester (3 days)



 Hotzone Solutions  
Training Facility

 ICI International  
CBINE Institute

**JOIN NOW**